

# MONTHLY MEMBERSHIP PROGRESS REPORT

LOCATION INDIA

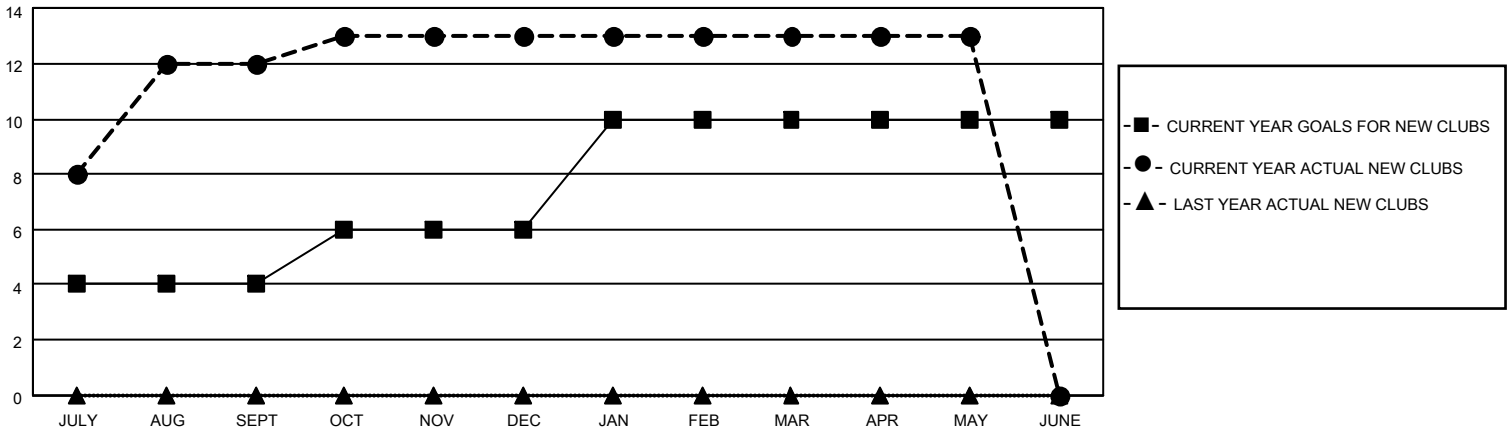
District 324 B

Results as of: 5/31/2022

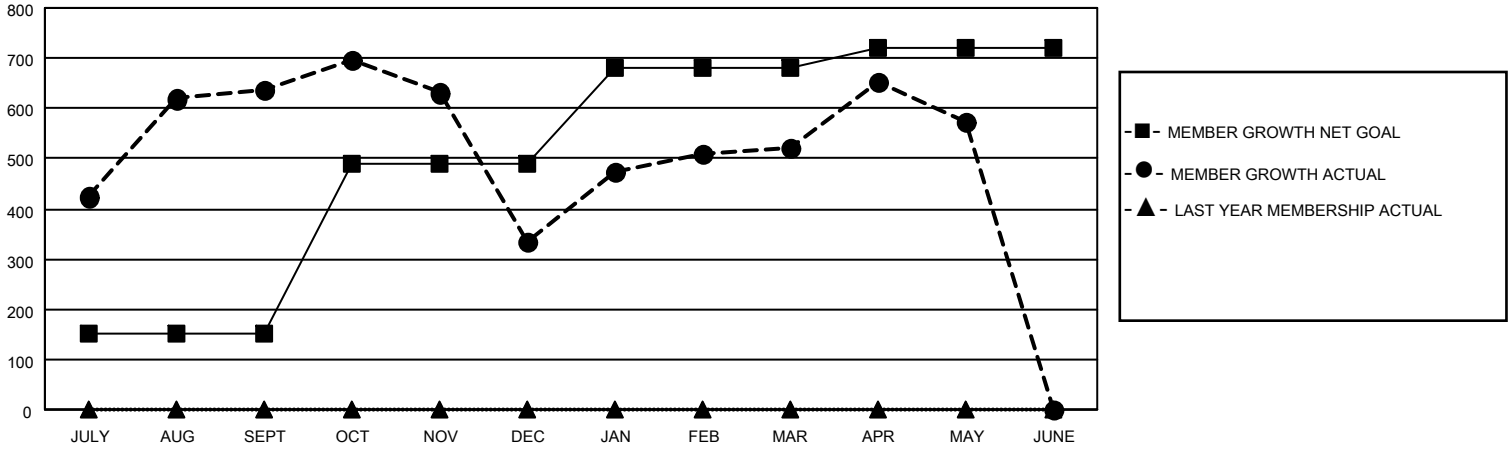
Clubs			
RESULTS FOR 2021-2022			
QUARTER	NEW CLUB GOAL	NEW CLUBS	DROPPED CLUBS
JULY/AUG/SEPT	4	12	2
OCT/NOV/DEC	2	1	15
JAN/FEB/MAR	4	0	3
APR/MAY/JUNE	0	0	0

Members			
RESULTS FOR 2021-2022			
QUARTER	MEMBER GROWTH NET GOAL	MEMBER GROWTH ACTUAL	DROPPED MEMBERS ACTUAL (including transfers)
JULY/AUG/SEPT	150	807	150
OCT/NOV/DEC	340	293	577
JAN/FEB/MAR	190	420	167
APR/MAY/JUNE	40	330	260

**GOALS AND ACTUAL NEW CLUBS CUMULATIVE**



**GOALS AND ACTUAL MEMBERS CUMULATIVE**



**DROPPED CLUBS: 20**

**177 CLUBS OF 194 ADDED 1 OR MORE NEW MEMBERS**

**GENDER DISTRIBUTION**

MALE	5,332 (76.29%)
FEMALE	1,653 (23.65%)
NON BINARY	0 (0.00%)
PREFER NOT TO ANSWER	4 (0.06%)

**DROPPED MEMBERS**

DECEASED	29
CLUB CANCELLED	458
OTHER	667
<b>TOTAL</b>	<b>1,154</b>

[CLICK HERE FOR CUMULATIVE MEMBERSHIP DATA](#)

TOTAL FAMILY UNIT MEMBERS	4,339
FAMILY MEMBERS PAYING HALF DUES	2,814